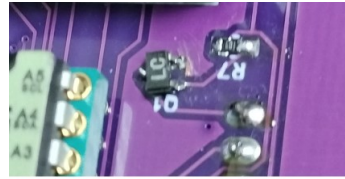
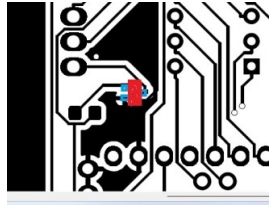


Designator	Footprint	Quantity/ pro mini	Quantity/ ATMEGA	Value	LCSC Part #
C1, C11,C14	0805	3	3	470p	
C10, C19, C2, C20, C3, C7, C9	0805	7	7	0.1u	
C12, C13	0603	*	*	62p	
C15, C16	0603	2	2	15p	
C17, C18	0603	2	2	0.15u	
C4, C6	CP_Radial_D5.0mm_P2.50mm	2	2	10u	
C5, C8	0603		2	20p	
D1, D2	LED_D3.0mm_Red,Green	2	2	LED	
D3	D_SMC-	1	1	1N4001	
DS1	WC1602A	1	1	WC1602A	
H1, H2, H3, H4	MountingHole_3.2mm_M3	4	4	MH	
J1	SMA_Samtec_SMA-J-P-X-ST- EM1_EdgeMount	1	1	LO0	
J2, J6	SMA_Samtec_SMA-J-P-X-ST- EM1_EdgeMount	*	*	LO1,LO2	
J3	PinHeader_1x07_P2.54mm_Vertical	1	1	Si5351a	
J4	PinHeader_1x11_P2.54mm_Vertical	1	1	PANEL/MAIN	
J5	PinHeader_1x02_P2.54mm_Vertical	1	1	VIN	
J7	PinHeader_1x04_P2.54mm_Vertical	1	1	i2c	
L1	0603	*	*	320n	
L2	0603	1	1	82u	
P1	Socket_Strip_Arduino_1x12	1		Digital	
P2	Socket_Strip_Arduino_1x06		1	COM	
P3, P5	Socket_Strip_Arduino_1x02	2		ADC	
P4	Socket_Strip_Arduino_1x12	1		Analogue	
P6	Pin_D1.1mm_L8.5mm_W2.5mm_FlatFor	1		GND	
Q1	SOT-323_SC-70	1	1	2SC2645 Note1	
R1	0805	1	1	2k	
R10, R5, R7, R8, R9	0805	5	5	10k	
R6	0805	1	1	160	
R11, R13	0805	*	*	150	
R12	0805	*	*	39	
R2	0805	1	1	390	
R3	0805	1	1	680	
R4	0805	1	1	1k	
RV1	Potentiometer_ACP_CA6- H2,5_Horizontal	1	1	10k	
SW1	SW_PUSH_6mm	1	1	FREQ	
SW2	SW_PUSH_6mm	1	1	VOL	
SW3	SW_PUSH_6mm	1	1	SQL	
SW4	SW_PUSH_6mm	1	1	SCAN	
SW5	RotaryEncoder_Alps_EC11E- Switch_Vertical_H20mm_CircularMoun tingHoles	1	1	RE_Sw	
U1	DIP-28_W7.62mm		1	ATmega328P- PU	
U2	SOT-223-3_TabPin2	1	1	AP1117-50	
Jumper	Connect +5V(Atmega#7) with VCC(P4#4)	1	1	Note 2	
Y1	Crystal_HC49-U-3Pin_Vertical		1	16MHz	
Cut trace		1	1	Note4	

Note1 If you install SC59 TR, please refer below photo.



Note2 Please connect +5V with VCC to work with USB serial PCB.

Note3 When you use the single frequency source, you need not * marked parts. Those are involved for CLK1, CLK2.

Note4